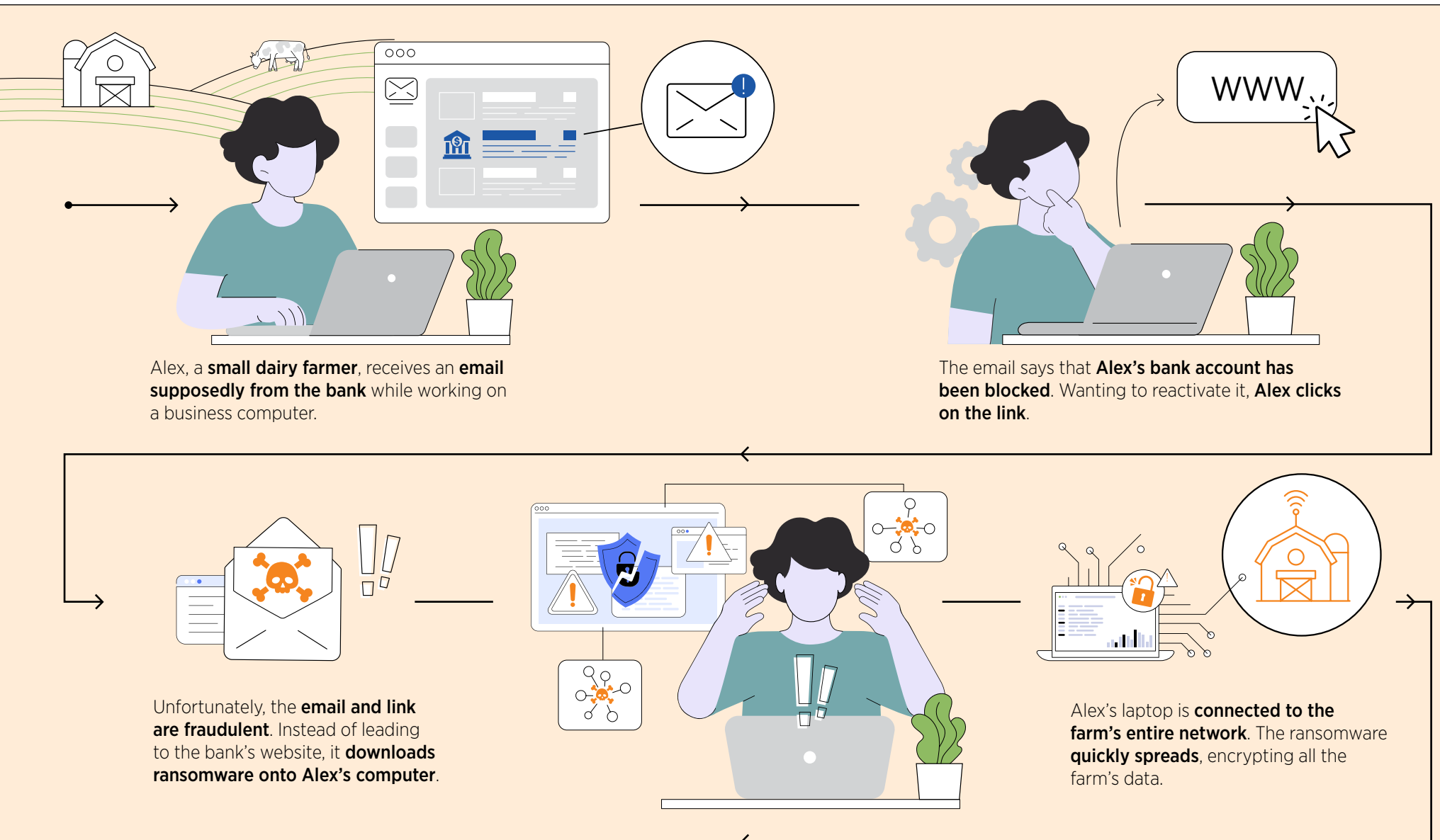


CYBER SECURITY: A CASE STUDY IN THE DAIRY SECTOR

Agri-businesses of all sizes are vulnerable to cyber incidents. Here's one example of how a phishing attack could impact your business and what you can do to protect it.



This attack has severe consequences

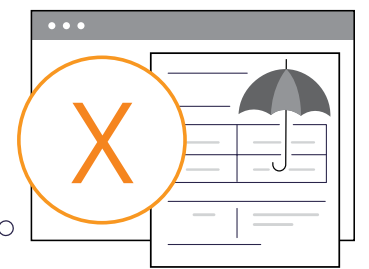
Autonomous milking machines
The ransomware **stops** the autonomous milking machines, **disrupting** the milking schedule and **impacting** the cows' health and milk production.

Supply chain disruption
All supply-chain **contacts** and **communications** are encrypted, halting ordering and distribution.

- Alex can't place orders for feed, vet supplies, equipment, and can't receive updates on deliveries.
- The distribution process is crippled. Milk shipments are halted, inventory and order statuses are impacted.

Operational shutdown
Critical farm management software and records are **inaccessible**, impacting the farm's operations.

- The farm can't communicate with partners or manage logistics, leading to delays, missed deadlines, and potential reputational damage.
- Alex can't access email to reach customers.
- Many orders are delayed, shipments are missed, and trust with partners is eroded.



Alex's farm **does not have an IT team or cyber insurance**. Without incident restoration services, Alex **feels forced to pay the ransom to decrypt data and resume operations**. The financial loss and operational disruption are devastating.

Alex's situation could have been mitigated

Cyber security training for Alex and employees could have helped them recognize phishing emails and avoid clicking suspicious links.

Antivirus and anti-malware software could have detected and blocked the ransomware before it spread.

Network segmentation can prevent malware from spreading.

Regular backups to an isolated, off-network location would have made it easier for Alex to restore systems. Backing up data creates copies of important information, and storing back-ups separately from the main system, such as on an external hard drive or a secure cloud service, adds a layer of security.

Cyber insurance can provide financial support and access to professional incident response services.

Incident response planning ensures that all employees know how to respond to a cyber incident.



Stay vigilant to protect your business

Visit our **website** for more information

agriculture.canada.ca/cyber-security-farming-business



Agriculture and Agri-Food Canada

Agriculture et Agroalimentaire Canada

Canada